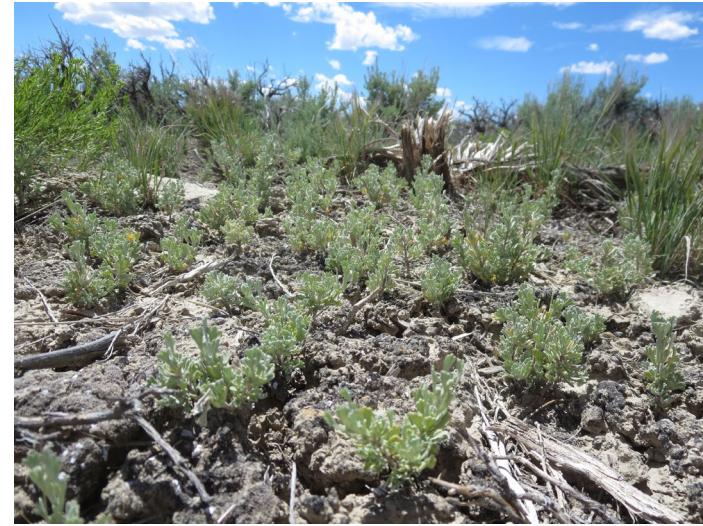


# Status Update on Big Game Migration Corridors and Techniques for Successful Reclamation



Jill Randall  
Big Game Migration Coordinator  
Wyoming Game and Fish Department



# MIGRATION CORRIDOR 101

## Why migrate?

- Summer and Winter Range (Connectivity)
- Migration Promotes Abundance (Nutrition)



**Too Young**

Not enough biomass



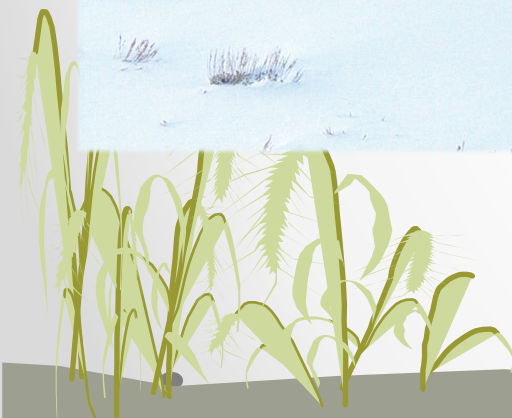
**Just Right**

Easy to digest  
High in nutrients



**Too Old**

Build up of defense compounds  
Hard to digest





# MIGRATION CORRIDOR 101

## Why migrate?

- Resident vs Migratory vs Nomadic
- Long, Medium, Short Distance Strategies in One Herd

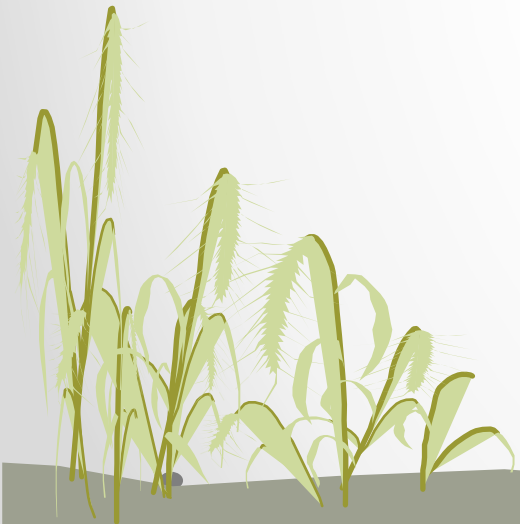




# MIGRATION CORRIDOR 101

## Why migrate?

- Fidelity to Routes
- Timing Can Vary
- Why We Still Have Migration in Wyoming





# MIGRATION CORRIDOR 101

## Components of a Corridor

- Not all Parts of the Corridor Are Created Equal
- High-Medium-Low Use
- Stopovers and Bottlenecks





# MIGRATION CORRIDOR 101

- 2016 Ungulate Migration Corridor Strategy
- 2018 DOI Secretarial Order 3362
- 2020 Governor's Wyoming Mule Deer and Antelope Migration Corridor Protection Executive Order

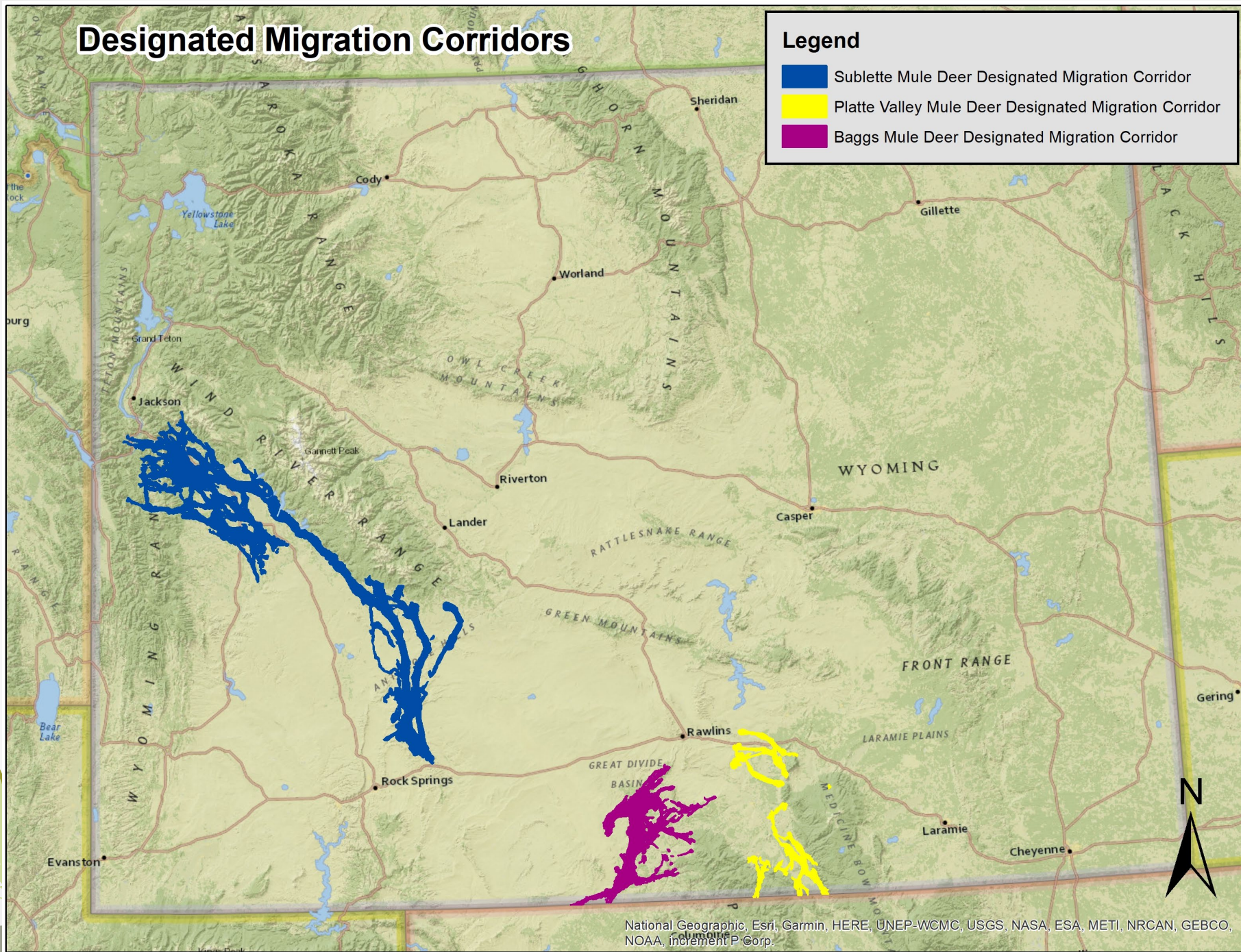




# Designated Migration Corridors

## Legend

- Sublette Mule Deer Designated Migration Corridor
- Platte Valley Mule Deer Designated Migration Corridor
- Baggs Mule Deer Designated Migration Corridor



National Geographic, Esri, Garmin, HERE, UNEP-WCMC, USGS, NASA, ESA, METI, NRCAN, GEBCO, NOAA, increment P Corp.



# MIGRATION CORRIDOR 101

## Why Designate or Identify a Corridor

- Identify Threats
- Prioritize Conservation
- Funding/Grants (2019-2021)
  - NFWF: \$1,753,000
  - PWF: \$596,500
  - NRCS/RCPP: \$ 11.4 million





## ON THE GROUND WORK

### Spring

- Early Green-up Forage
- Minimize Invasives
- Obstacle-Free Movement





## ON THE GROUND WORK

### Fawning and Stopover Areas

- Proximity of Forage, Cover and Water
- Minimize Invasives
- Security from disturbance





## ON THE GROUND WORK

### Fall

- Mixed mountain shrubs and sagebrush
- Minimize Invasives
- Obstacle-Free Movement





## ON THE GROUND WORK

### Winter

- Sagebrush and Other Shrubs (Deer and Pronghorn)
- Minimize Disturbance/Stress
- Obstacle-Free Movement





## TYPES OF PROJECTS

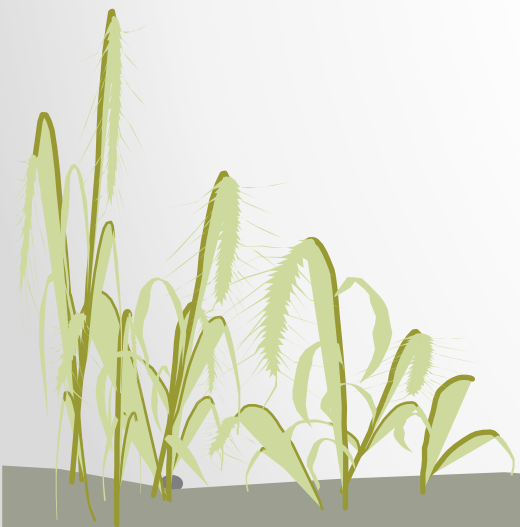
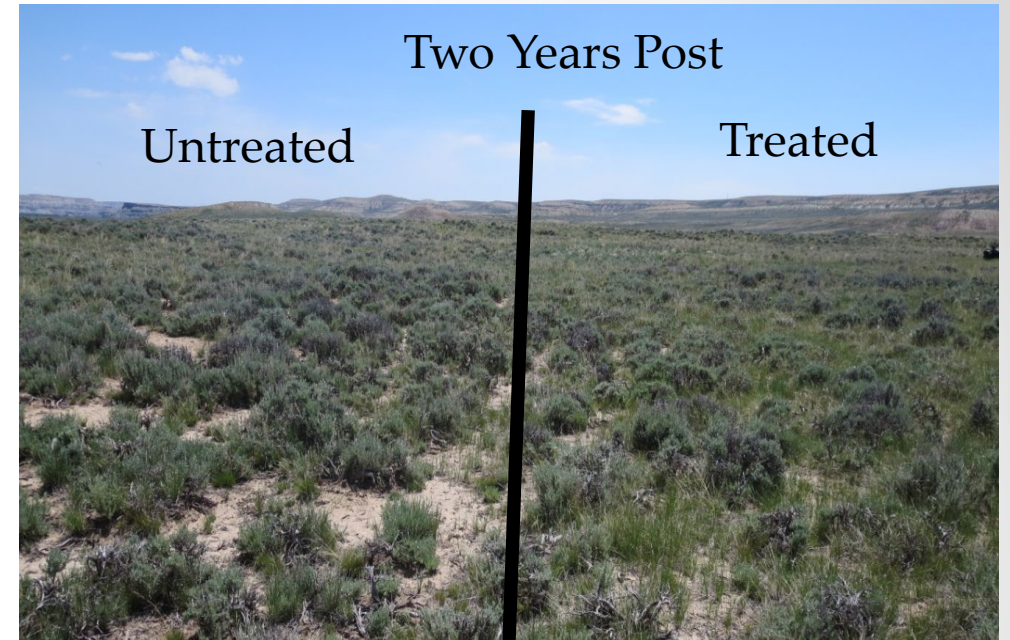
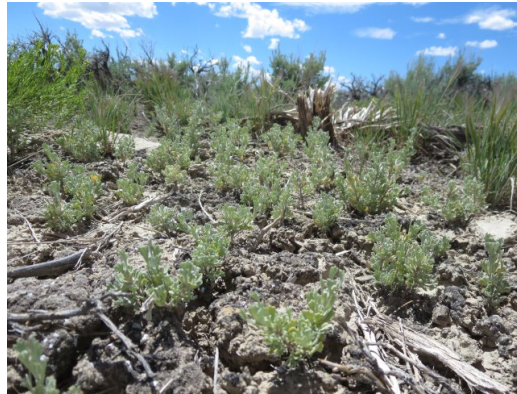
### Cheatgrass and Invasive Management





## TYPES OF PROJECTS

### Shrub Treatments





# TYPES OF PROJECTS

## Aspen Management





# TYPES OF PROJECTS

## Fence Modifications





## TYPES OF PROJECTS

### Wildlife Crossings







Questions? Thanks!

[Jill.Randall@wyo.gov](mailto:Jill.Randall@wyo.gov)